

# VERSALIFT

## VTL-135-F

Van mounted telescopic platform



Ford Transit  
(3,500kg GVW)



LMC controls with  
variable outreach



Emergency lowering  
controls in pedestal



Knuckle/turret tail swing  
within the mirrors



Outriggers within  
the mirrors



**Versalift Distributors (UK) Ltd.**  
1 Altendiez Way, Latimer Park,  
Burton Latimer, Kettering. NN15 5YT

T: 01536 721010  
E: sales@versalift.co.uk

F: 01536 721111  
W: www.versalift.co.uk

# VERSALIFT VTL-135-F



## Additional Specifications

13.5m	11.5m	8.4m*	230kg	Under-mounted	140°	LMC	A-frame	3,500kg	325kg**	420°	3/5°	1kV

## Dimensions

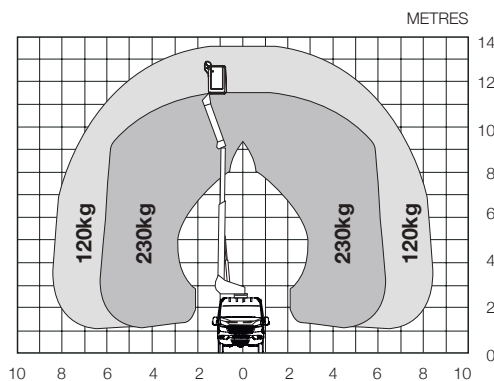


**Length:** 6,790cm      **Height:** 3,400cm      **Wheelbase:** 3,300cm

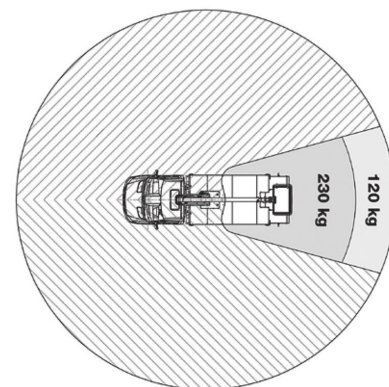
## Optional equipment

- Bespoke storage racking
- Twin joystick LMC control system with LCD interface screen
- Walk-in or Duck-under bucket
- 1kV certified insulation
- Chapter 8 compliance
- Stabiliser controls from bucket
- Slew rotation interlock
- Reversing camera
- Bucket rotator (2 x 90°)\*\*
- Limited working area without outriggers

## Diagrams



Working envelope



Limited working area without outriggers (optional)

## Key features



Manufactured from ultra-high strength steel, a profiled boom delivers exceptional rigidity, strength and smooth platform operation. For low maintenance, integrated boom wear pads now follow this profile.



Pedestal mounted emergency lowering valves, located at ground level within load area are safe and easy to access.



Impressive outreach with LMC load sensing system. A-frame outriggers and tail swing of turret within the mirrors of the vehicle for improved safety.



Optional twin joystick LMC control system enables load dependent variable outreach and up to two actions simultaneously.

## Notes

Technical information is subject to change without notice. Images may show optional equipment.

\*Depending on the vehicle and subject to options fitted

\*\*Max. payload after driver, passenger and fuel and subject to options fitted

\*\*\*Reduced outreach

Revision: 09/2018



**Versalift Distributors (UK) Ltd.**  
1 Altendiez Way, Latimer Park,  
Burton Latimer, Kettering. NN15 5YT

T: 01536 721010  
E: sales@versalift.co.uk

F: 01536 721111  
W: www.versalift.co.uk